

Operating Guide

Connection of ECL Comfort 296 / 310 controller to wireless network (WLAN)



1.0 Contents

1.0 Contents	1
2.0 Introduction	2
2.1 Use the ECL Comfort 296 / 310 in SCADA systems via WLAN	2
2.2 What is a wireless bridge?	2
3.0 System overview	2
3.1 Components	2
3.2 Wireless internet router	3
3.3 Wireless bridge	3
3.4 Configure the wireless bridge	3
3.5 Select wireless network to be used for wireless bridge	4
3.6 Configure ECL Comfort 296 / 310 controller to local network	4

2.0 Introduction

2.1 Use the ECL Comfort 296 / 310 in SCADA systems via WLAN

The ECL Comfort 296 / 310 controller has a built-in ethernet interface which enables it to connect to the local network (LAN) via a standard ethernet cable.

By connecting the ECL Comfort 296 / 310 to the local network and/or the internet the ECL Comfort 296 / 310 can be used in SCADA systems like the Danfoss ECL Portal.

In some installations it may be preferred to use wireless network (WLAN) instead. In such cases the ECL Comfort 296 / 310 can easily connect to a wireless network by using a wireless bridge.

2.2 What is a wireless bridge?

The function of the wireless bridge is to be a bridge between a wireless network (WLAN) and an ethernet network (LAN).

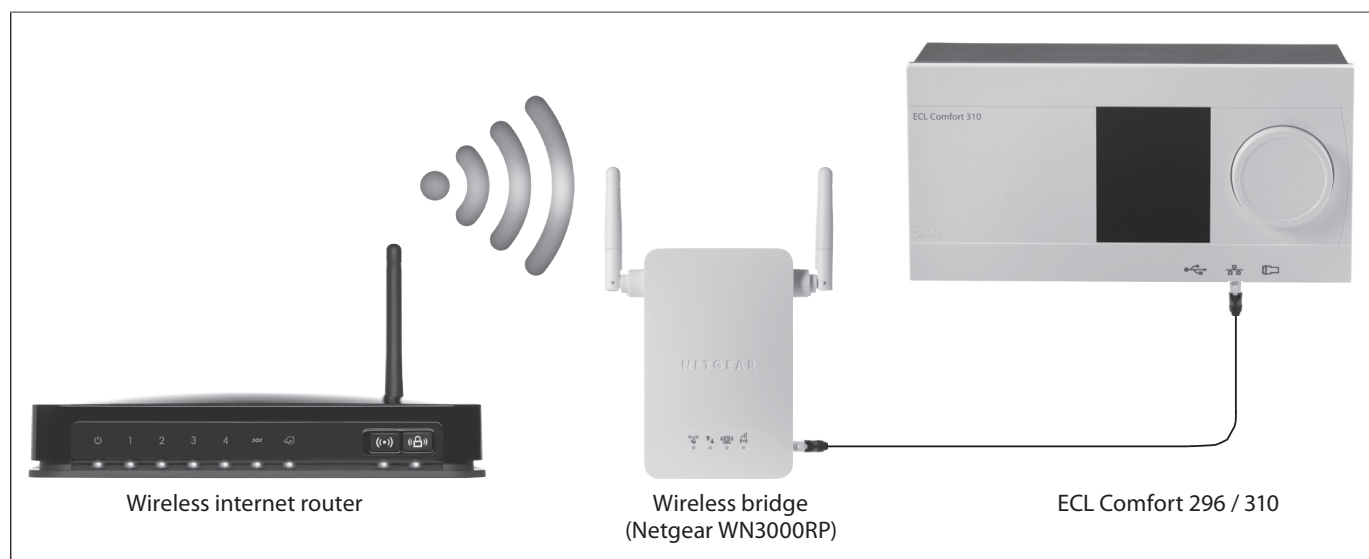
By using a wireless bridge a device like the ECL Comfort 296 / 310 can connect to the wireless network and/or the internet using its standard ethernet interface.

3.0 System overview

3.1 Components

The components of interest are shown in the picture below. A new or existing wireless internet connection (WLAN) is made available by the wireless internet router in the building.

A wireless bridge is added to the heating installation and the ECL Comfort 296 / 310 is connected to the wireless bridge using a standard ethernet cable.



3.2 Wireless internet router

This is a standard wireless internet router which may already be available in the building providing a wireless internet connection.

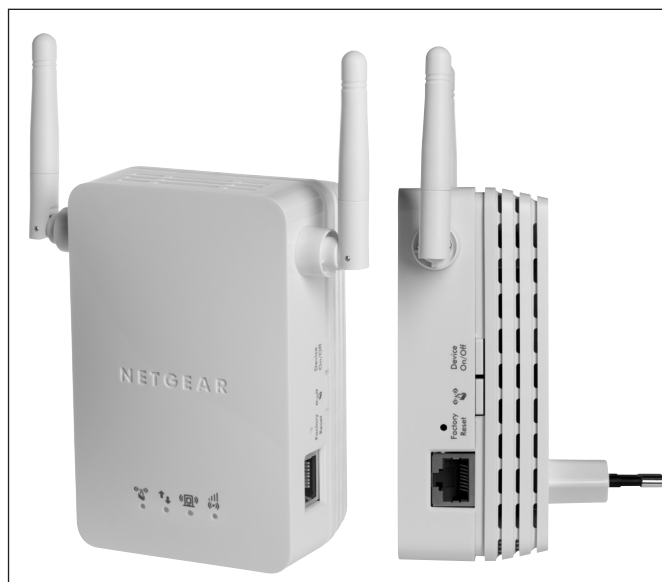
To connect to the wireless internet the name of the wireless network (SSID) and the password must be known.

3.3 Wireless bridge

The wireless bridge is the extra electronic device needed to make the ECL Comfort 296 / 310 able to connect to the wireless internet connection.

Several wireless bridges are available on the market, but the one from Netgear (type WN3000RP) shown in the picture is very simple to install and configure.

The wireless bridge is inserted into the mains plug and a standard network cable is connected from the side of the wireless bridge to the ECL Comfort 296 / 310 ethernet connection.

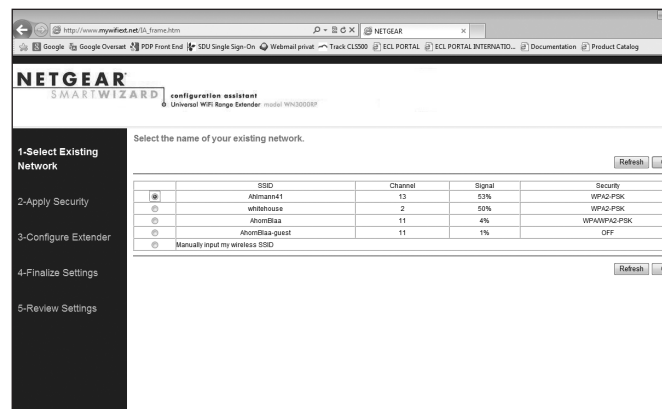


Netgear (type WN3000RP).

3.4 Configure the wireless bridge

Prior to connecting the wireless bridge to the ECL Comfort 296 / 310 it has to be configured by following the Netgear wizard.

The Netgear wizard is accessed by connecting a computer to the ethernet connector of the wireless bridge, opening an internet browser and entering www.mywifext.net in the address field.



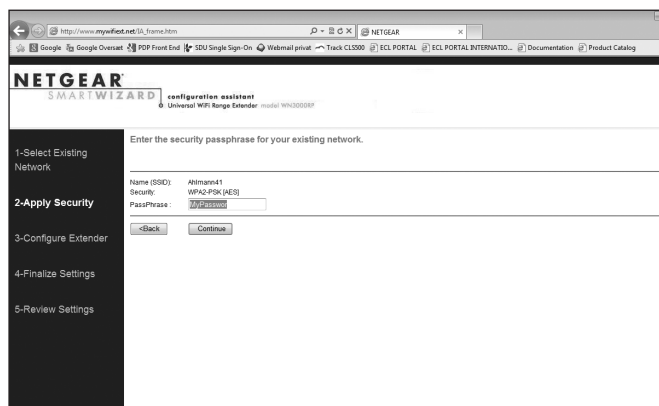
Select the wireless network to be used by the ECL Comfort 296 / 310 in the Netgear Wizard.

3.5 Select wireless network to be used for wireless bridge

The Netgear wizard asks for wireless network to be used by the wireless bridge. Select the wireless network.

The Netgear wizard now asks for the password to the selected wireless network. Enter the password.

The wireless bridge is then completing the configuration and the ethernet connection on the side of the wireless bridge can now be connected to the ECL Comfort 296 / 310.

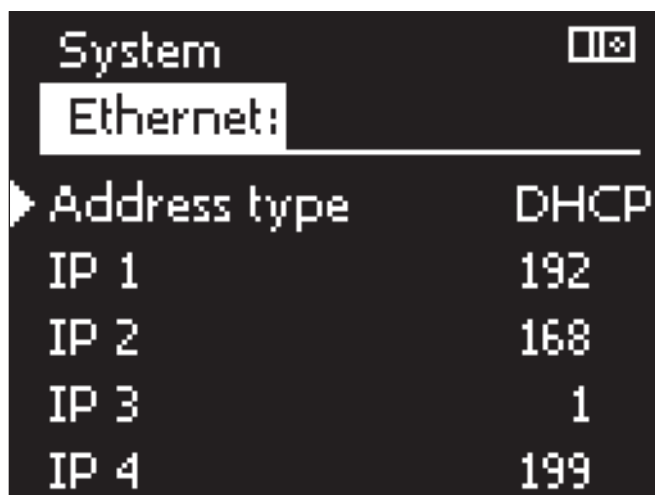


Enter passphrase for the selected wireless network.

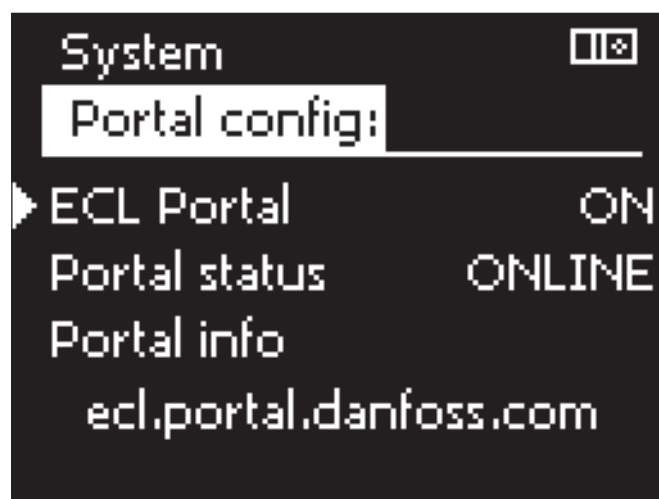
3.6 Configure ECL Comfort 296 / 310 controller to local network

The ECL Comfort 296 / 310 controller must be configured to connect to the local network (LAN).

If the ECL Portal is used as SCADA system then the ECL Comfort 296 / 310 must be configured for DHCP instead of STATIC in the System>Ethernet menu and the ECL Portal feature must be enabled in the System>Portal Config menu.



If used with ECL Portal: Configure for DHCP.



Enable the ECL Portal in the Portal Config menu.



Danfoss A/S

Heating Segment • heating.danfoss.com • +45 7488 2222 • E-Mail: heating@danfoss.com

Danfoss can accept no responsibility for possible errors in catalogues, brochures and other printed material. Danfoss reserves the right to alter its products without notice. This also applies to products already on order provided that such alterations can be made without subsequential changes being necessary in specifications already agreed. All trademarks in this material are property of the respective companies. Danfoss and all Danfoss logotypes are trademarks of Danfoss A/S. All rights reserved.