

Operating Guide

DECS 2.0 - Upgrading existing installations



1.0 Contents

1.0 Contents	1
2.0 Installation and setup	2
2.1 Stop running tasks and processes.....	2
2.2 Upgrade Atvise SCADA Client software.....	3
2.3 Upgrade the OPC Server and communication drivers	4
2.4 Upgrade DECS 2.0 objects	5
3.0 Finalize installation	7

2.0 Installation and setup

2.1 Stop running tasks and processes

The OPC Server task must be stopped by closing the cmd.exe console window.

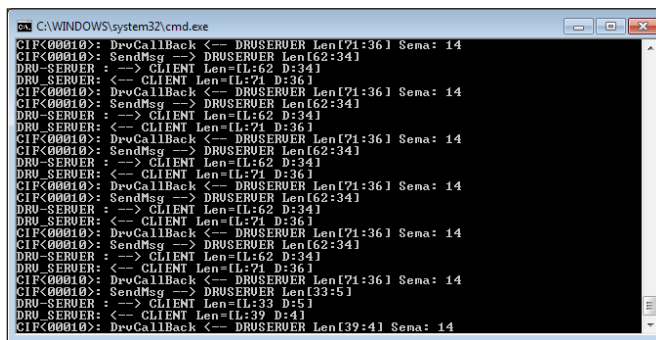


Fig. 1: OPC Server task

The communication driver(s) must be stopped.

This is done by opening the Windows Task Manager, selecting the communication driver(s) in the Processes tab, i.e. CommDrvTcp.exe for TCP communication, and click 'End Process'.

Alternatively, the communication driver(s) can be stopped by right-clicking on the icon in the taskbar and clicking on "quit".

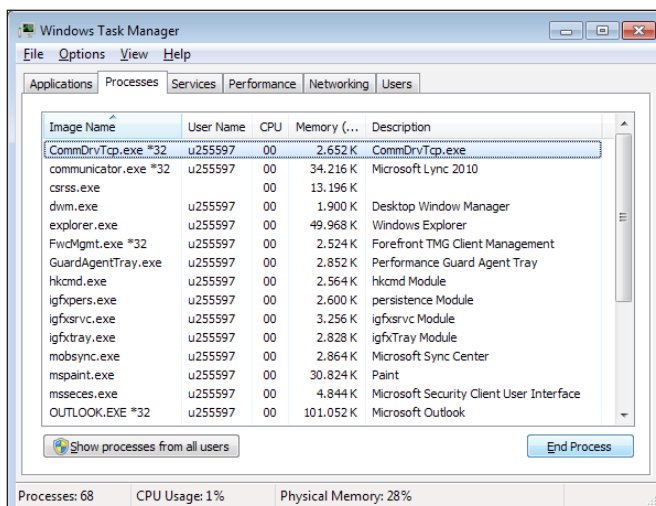


Fig. 2: Communication driver processes

It is recommended to backup the nodes.db file which is a database of all locally registered controllers and settings in the DECS 2.0 system.

This file is located in the folder where Atvise is installed.

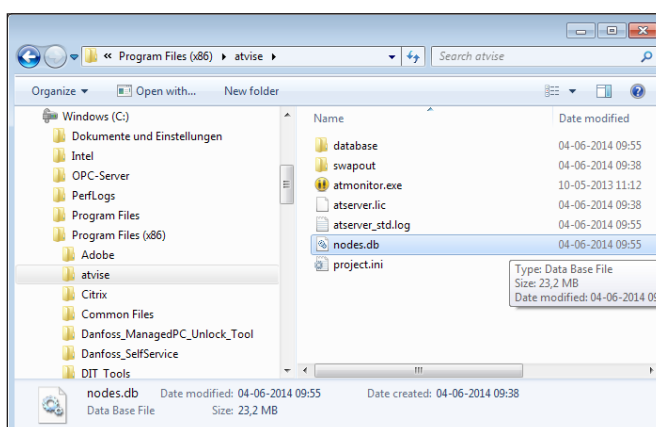


Fig. 3: Location of nodes.db file

2.2 Upgrade Atvise SCADA Client software

If the DECS 2.0 release contains a newer version of the Atvise SCADA Client software than what is already installed on the DECS 2.0 server then the steps in this chapter must be executed.

Uninstall the Atvise SCADA Client software via the 'Uninstall a program' feature in Control Panel.

Select the Atvise program in the list of installed programs and click 'Uninstall/Change'.

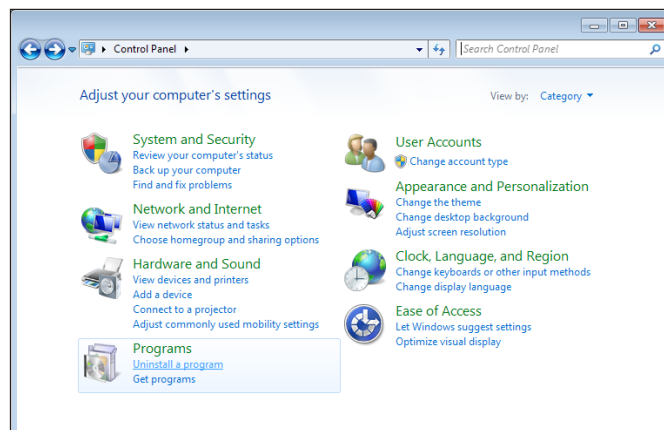


Fig. 4: Uninstall a program via Control Panel

Follow the instructions on the screen to complete the uninstallation of Atvise.

Click 'Close' when uninstallation is completed.

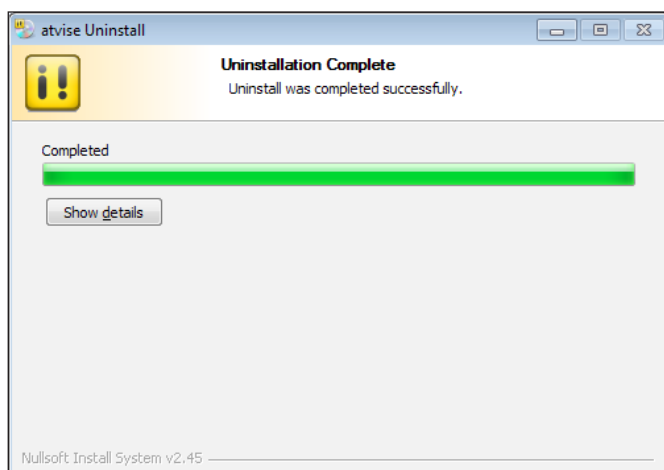


Fig. 5: Uninstall Atvise

Install the new Atvise program by following the instructions in the DECS 2.0 installation guide.

Reuse the license key which was used for the previous installation of Atvise.

If further actions are needed to complete the installation of Atvise they will be described in the webpage opening automatically when the Atvise setup wizard completes.

Examples could be installation of patches for Atvise.

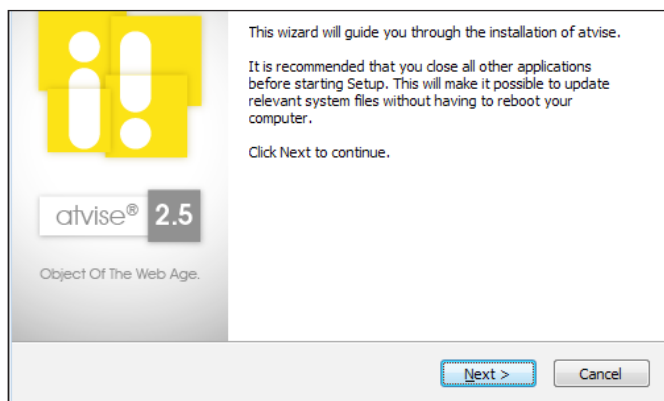


Fig. 6: Install Atvise

Execute the Atvise maintenance tool to add new indexes for the database.

The maintenance tool is located in the folder where Atvise is installed, i.e. c:\program files\atvise, and is named 'atmaintenance.exe'.

It must be started with Administrator rights.

Click on 'Action' and 'Create index'.

When prompted for a folder then select the folder where nodes.db is located, i.e. c:\program files\atvise.

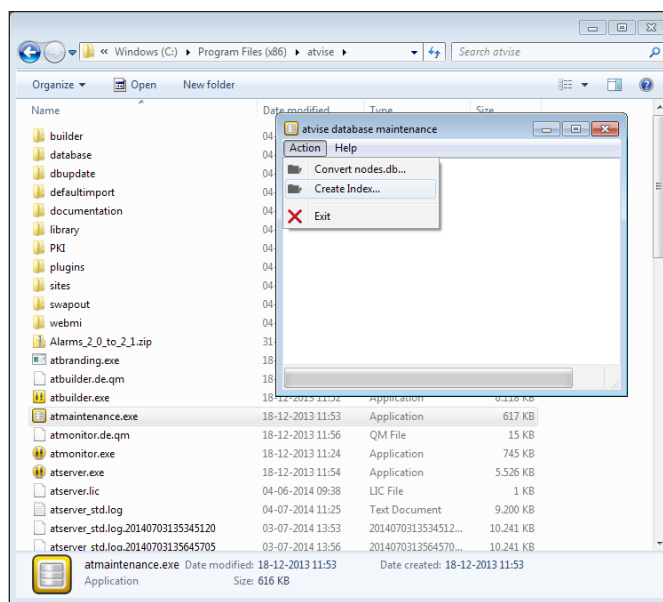


Fig. 7: Execute the Atvise Maintenance Tool

2.3 Upgrade the OPC Server and communication drivers

If the DECS 2.0 release contains a newer version of the OPC-Server and/or communication drivers than what is already installed on the DECS 2.0 server then the steps in this chapter must be executed.

Locate the folder 'OPC-Server' in the root of the DECS 2.0 installation package.

Backup the .ini files in the 'Driver' folder on the server (i.e. CommDrvModbus.ini and CommDrvTcp.ini) containing the configuration of the communication drivers.

Copy the 'OPC-Server' folder and all of its contents to the corresponding 'OPC-Server' folder on the server.

Accept to merge and overwrite any sub folder and file when prompted.

Restore the backed-up .ini files to the server.

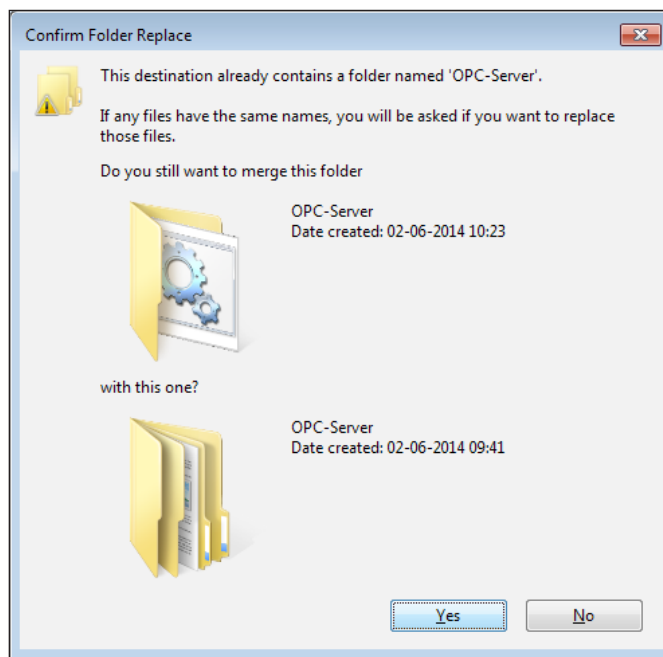


Fig. 8: Copy/overwrite OPC-Server folder

2.4 Upgrade DECS 2.0 objects

Start the Atvise Builder software via the Project Console.

When asked for login information then enter username and password with Super User credentials which is also used to log in to DECS 2.0.

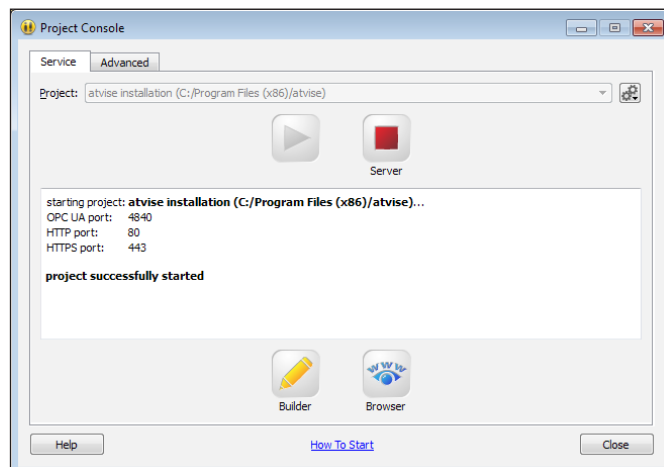


Fig. 9: Start Atvise Builder software and log in

Click on the 'Import (absolute) from XML...' menu item in the builder menu.

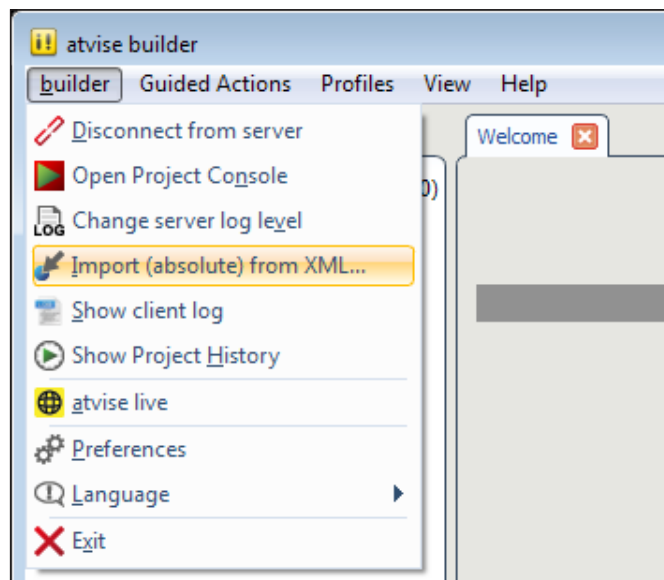


Fig. 10: Select Import

Import all Object Types by locating the 'Object Types' sub folder in the 'Upgrade' folder located in the root of the DECS 2.0 installation package, then select all files in that folder and click 'Open'.

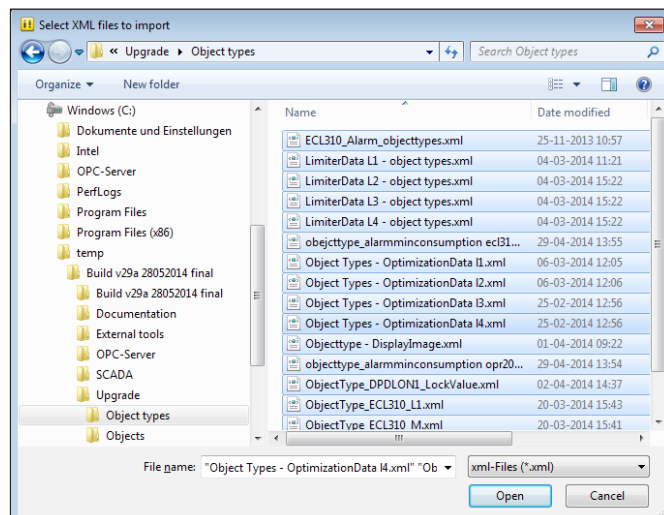


Fig. 11: Import all Object Types

When all Object Types are imported then a message box will be shown

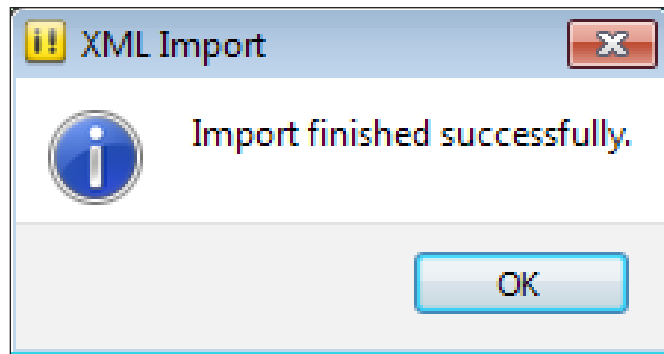


Fig. 12: Successful import

Click on the 'Import (absolute) from XML...' menu item in the builder menu.

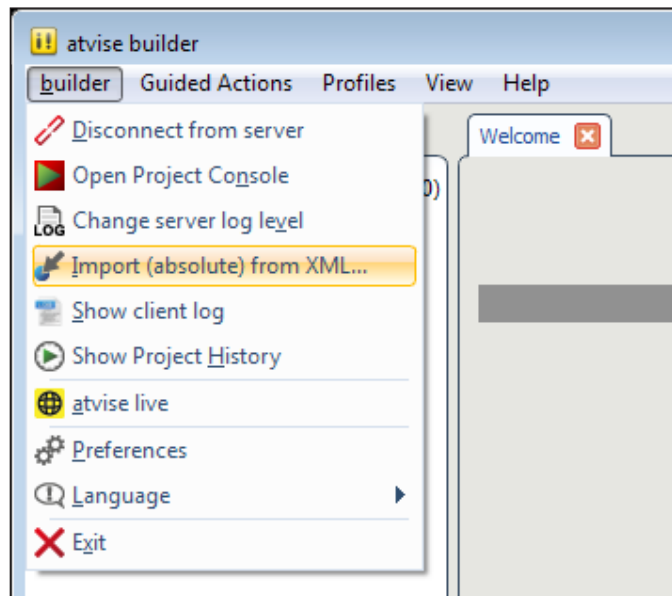


Fig. 13: Select Import

Import all Objects by locating the 'Objects' sub folder in the 'Upgrade' folder located in the root of the DECS 2.0 installation package, then select all files in that folder and click 'Open'.

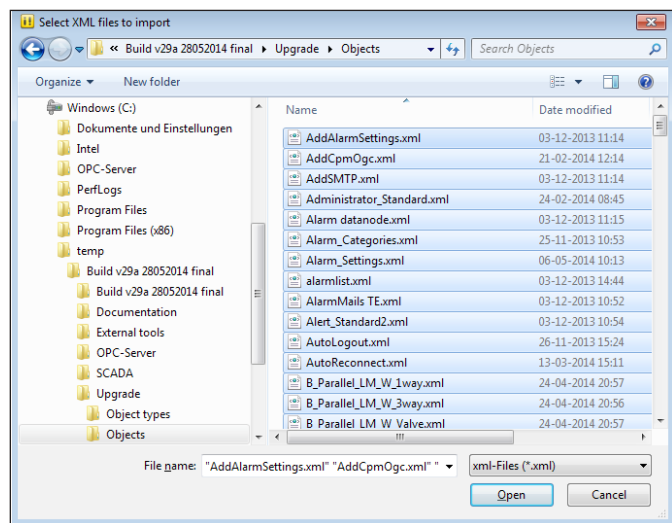


Fig. 14: Import all Objects

When all Objects are imported then a message box will be shown.

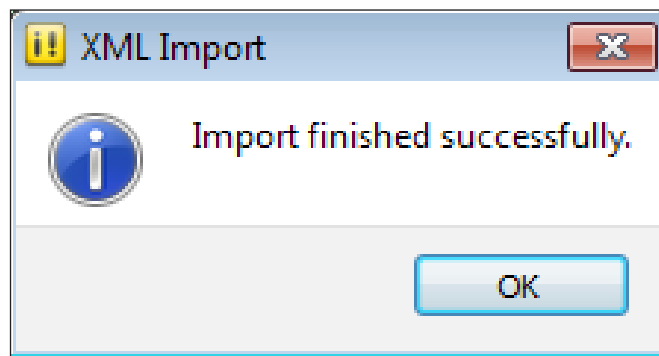


Fig. 15 Successful import

Start script(s) to finalize upgrade by using the Atvise WebMI Script tool.

Open this webbased tool in the browser by entering the following address:

'http://localhost/webmismcript.htm' or alternatively
'http://localhost/en/webmismcript.htm'

Enter the name of the script to be started in the Method Name field (without the .XML extension). Click 'Call' button. When status is indicated as 'HTTP-Status: 200' then the script has been successfully started. Alternatively, the Server Log file should be inspected for errors.

Repeat this step for any script listed in the bottom of the 'ChangeLog_NodesDB.txt' file located in the root of the DECS 2.0 installation package.

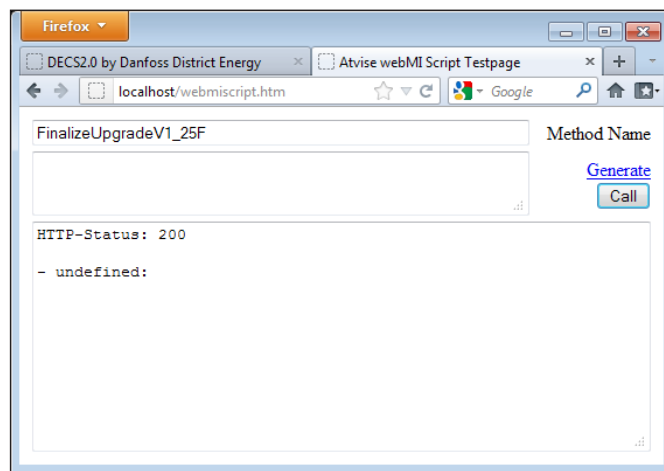


Fig. 16: Start script(s)

3.0 Finalize installation

There may be additional steps needed to be completed before the system can be restarted.

An example of such step could be to restore various parameters like billing time which may be different from the default values.

Finalize the installation by starting the Atvise server and also the OPC Server, i.e. by executing a predefined batch file as explained in the installation guide (must be started as 'Administrator').

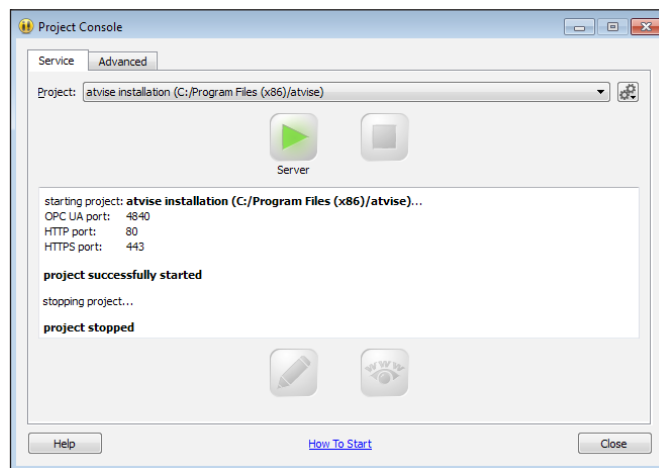


Fig. 17: Start Atvise server

