

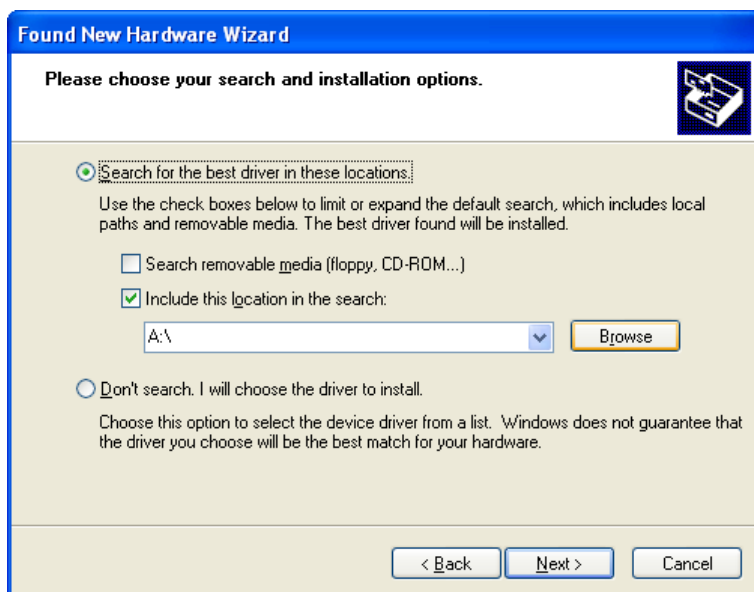
Instructions

This description is only intended for use in connection with ECL Comfort 210/310

USB driver installation guide

Connecting the ECL to the PC the first time

The ECL USB connection uses a special driver. When Windows detects ECL the first time, you will be prompted for a driver installation. The screenshots in this document are all from Windows XP but the procedure is the same in other Windows versions.



If you are running a 32 bit version of Windows then select the folder "ECL USB_driver_32bit" and press "Next". If you are running a 64 bit version of Windows then select the folder "ECL USB_driver_64bit" and press "Next". You can find both folders in the zip file that this document came with.

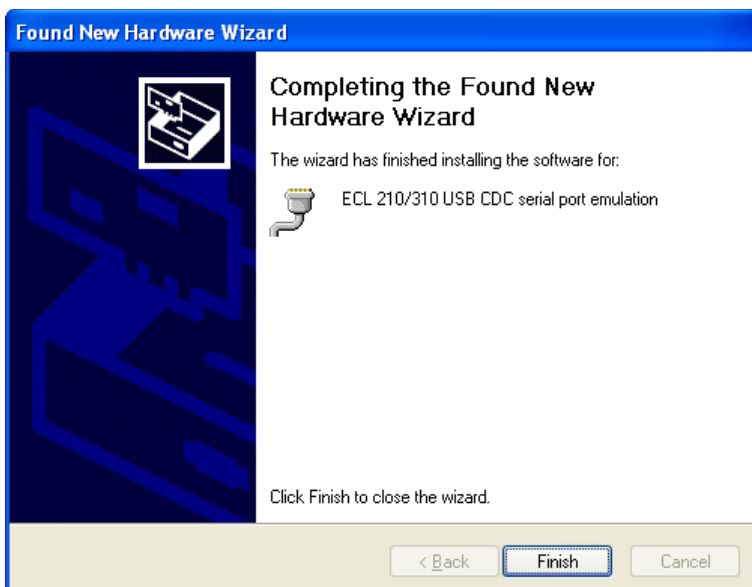
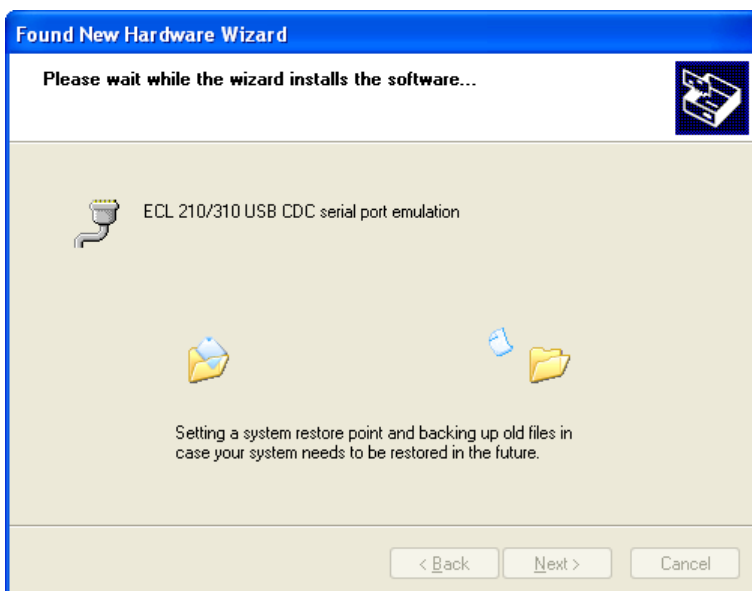
Instructions



This description is only intended for use in connection with ECL Comfort 210/310



Press "Continue Anyway".



Instructions



This description is only intended for use in connection with ECL Comfort 210/310

The ECL USB driver is now installed and the ECL should be visible in the Windows Device Manager.

